



Steering, Brake & Suspension Specialists

#CP179 - Front Sway Bar Installation Instructions for 1947-54 Chevrolet Trucks

Note:

Read these instructions completely before attempting this conversion.

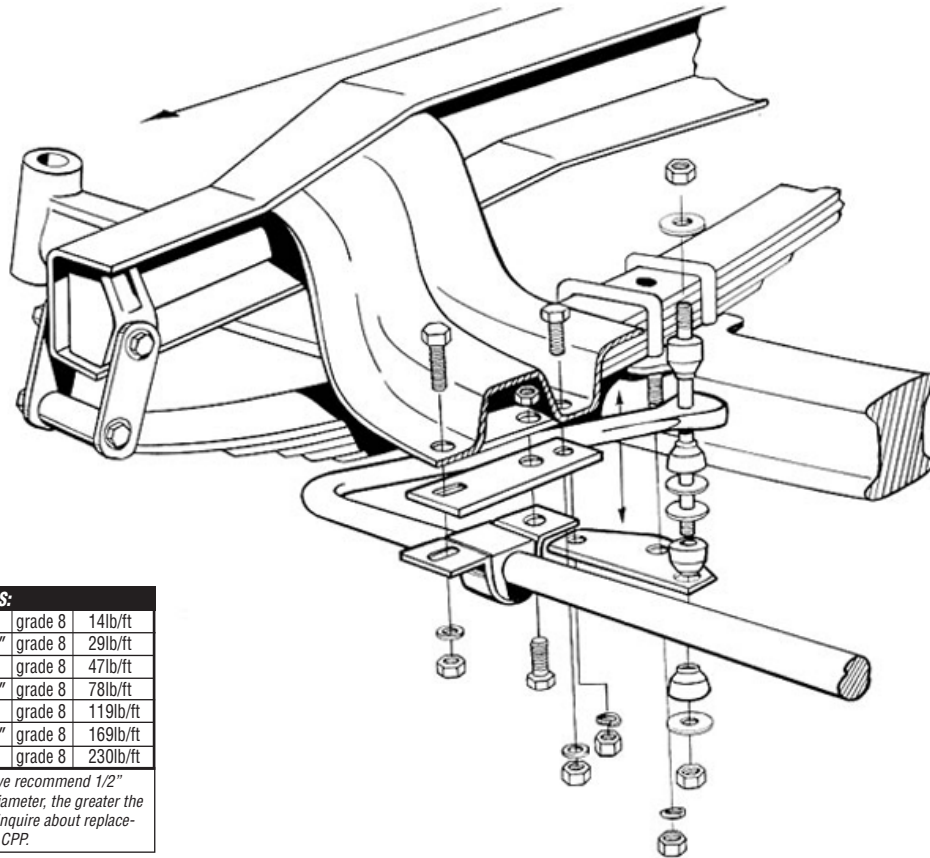
This bar was designed to replace your original equipment sway bar. The diameter of the bar is larger than the oem bar to increase roll resistance. The contours of the bar may differ slightly as some bends are not necessary. This has also increased the roll-resistance of the bar. This kit may come with all, some or none of the hardware required to install. Should the hardware be missing, the original oem hardware must be re-used. If these parts are too worn to be used it will be necessary to obtain them from an OE parts dealer. If your vehicle was not equipped with an OE sway bar, installation may not be possible.

Instructions:

1. Remove the OE sway bar and retain the hardware. Do not allow the suspension to hang as this may cause a binding effect and increase the difficulty to install the new bar.

2. This bar was designed to mount in the same location as the OE bar. Install the new bar using OE hardware and/or any hardware that was supplied with the kit.
3. On applications with endlinks, tighten the assemblies until the endlink bushings are slightly deformed, do not over tighten!
4. After the installation is complete, check the suspension travel and suspension parts for any interference with the bar. Turn the wheels lock to lock to check for tire clearance.
5. Road-test the vehicle to familiarize yourself with it's new handling characteristics.

PLEASE NOTE: The installer needs to make sure that nothing can make contact with a brake hose, caliper, or other brake component at any point through the entire range of steering and suspension movement. The installer also needs make sure none of the steering or braking components can become bound or jammed at any time through the range of suspension or steering movement.



GENERAL TORQUE SPECIFICATIONS:

1/4"	grade 5	10lb/ft	1/4"	grade 8	14lb/ft
5/16"	grade 5	19lb/ft	5/16"	grade 8	29lb/ft
3/8"	grade 5	33lb/ft	3/8"	grade 8	47lb/ft
7/16"	grade 5	54lb/ft	7/16"	grade 8	78lb/ft
1/2"	grade 5	78lb/ft	1/2"	grade 8	119lb/ft
9/16"	grade 5	114lb/ft	9/16"	grade 8	169lb/ft
5/8"	grade 5	154lb/ft	5/8"	grade 8	230lb/ft

NOTE: With 18" and larger wheels we recommend 1/2" wheel studs. The larger the wheel diameter, the greater the force is on the wheel studs. Please inquire about replacement wheel stud kits available from CPP.

© Classic Performance Products, Inc. 2015
All rights reserved. This document may not be reproduced without prior written permission of CPP.