

Steering, Brake & Suspension Specialists

#6372AGT-S - Side Fill Aluminum Fuel Tank Instructions for 1963-1972 GM Pick-Up Truck

Parts List:

1 ea. 1963-1972 Fuel Tank	1 ea. 1/2" 90° fitting
6 ea. 3/8-16 x1gr.8 Bolt	1 ea. 3/8 inch 90° fitting
6 ea. 3/8 Lock Washer	5 ea. 10-32 x 1/2
6 ea. 3/8 Flat Washer	1 ea. C-Notch Tab
2 ea. Flange Backing Strip	1 ea. 3/8-NPT plug

Required Parts:

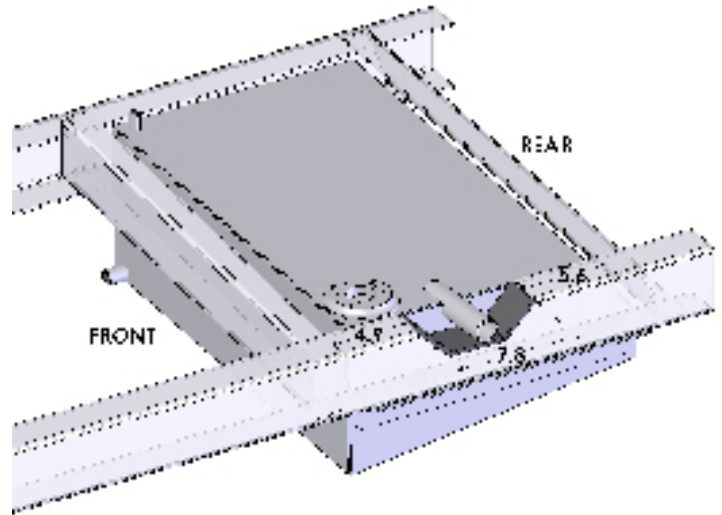
Fuel Line
Hose Clamps
1/2" Vent Hose
Hose Fill Kit (#CPFFK-S)
Fuel Level Sending Unit
Flat Fuel Door (#CPSF-F)
Curved Fuel Door (#CPSF-C)

Options:

The fuel tank is designed to work with the 6772 hidden hitch (frame mounted receiver hitch) part numbers; #6772HTH receiver hitch and mounting hardware, or #6772HTH-K receiver hitch, mounting hardware, and flip down license plate bracket kit.

Instructions:

1. Remove the bed from the truck.
2. Remove the spare tire mounting cross member. The cross member is located behind the shock mounts, and is attached to the bottom of the frame with one rivet on each end.
3. Use the c-notch tab as a template to mark the area of the left frame rail that will be cut out. Cut out the area on the frame for the c-notch.
4. Weld the c-notch tab into the frame as shown in the diagram below.
5. Using a floor jack against the bottom of the fuel tank, hold the fuel tank mounting flange tight against the bottom of the frame.
6. Using the flange backing strip as a template mark and drill three 3/8 inch holes thru the bottom of the frame and the tank mounting flange on each side of the fuel tank.
7. Position the flange backing strip in the channel of the frame as shown in the diagram below.
8. Bolt the fuel tank in place using the six 3/8 bolts, flat washers, and lock washers supplied with the kit.
9. Lower and remove the floor jack that was holding the fuel tank in place.
10. Thread the 1/2" 90° barbed fitting in to the bung located on the top of the fuel tank. Using a hose clamp connect a vent hose to the barbed fitting. (Make sure that the vent hose is safe for use with gasoline) The other end of the vent hose should be located 18" above the gas cap.
11. Be sure to read and follow the instructions that came with the sending unit. Check that the resistance of the sending unit is correct for the fuel gauge. Install the fuel tank sending unit thru the flange on top of the fuel tank. Align the top of the sending unit mounting holes with the threaded holes in the sending unit flange on the top of the fuel tank taking making certain that the float can not contact the sides of the fuel tank or the inner baffles. Tighten the sending unit with the 5 10-32 screws supplied with the fuel tank. For sending units equipped with a fuel

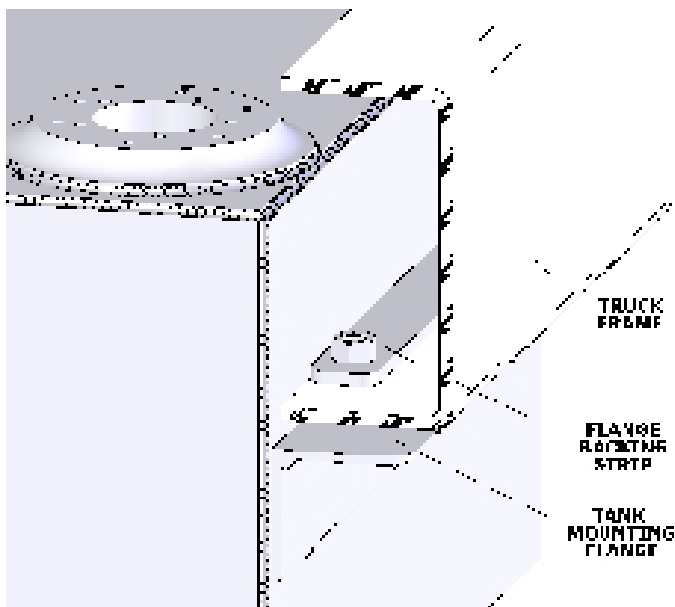


For technical help call Classic Performance Products Monday thru Friday 8:30am to 5:00pm at (714) 522-2000.

Classic Performance Products, Inc. 714.522.2000 | fax 714.522.2500

378 E. Orangethorpe Ave. | Placentia, CA 92870 | www.classicperform.com

#6372AGT-S - Side Fill Aluminum Fuel Tank Instructions for 1963-1972 GM Pick-Up Truck (Continued)



hose fitting skip step 13. For sending units without a fuel hose fitting skip step 12.

12. Use a hose clamp to connect the fuel hose to the fitting located on the top of the fuel tank sending unit. The other end of this hose will need to go to a fuel pump. (It is recommended that a fuel filter is used between the fuel tank and fuel pump.) Seal the threaded bung on the bottom of the fuel tank with a 3/8 NPT plug.
13. Install the 3/8" 90° barbed fitting into the threaded bung at the bottom of the fuel tank. Use a hose clamp and connect the fuel hose to the barbed fitting. The other end of this hose will need to go to a fuel pump. (It is recommended that a fuel filter is used between the fuel tank and fuel pump.)

14. A second 3/8" threaded bung is provided for fuel injected applications that require a fuel return line, plumb as necessary. If a fuel return line is not needed install the 3/8" plug in to this threaded bung. (Do not use the fuel tank until both the 3/8" bungs are plumbed!)
15. Install the fuel door (CPSF-C curved door, or CPSF-F flat door) sold separately.
16. Install the hose fill kit (CPFFK-S) sold separately.
17. Install the bed onto the truck.

GENERAL TORQUE SPECIFICATIONS:

1/4"	grade 5	10lb/ft	1/4"	grade 8	14lb/ft
5/16"	grade 5	19lb/ft	5/16"	grade 8	29lb/ft
3/8"	grade 5	33lb/ft	3/8"	grade 8	47lb/ft
7/16"	grade 5	54lb/ft	7/16"	grade 8	78lb/ft
1/2"	grade 5	78lb/ft	1/2"	grade 8	119lb/ft
9/16"	grade 5	114lb/ft	9/16"	grade 8	169lb/ft
5/8"	grade 5	154lb/ft	5/8"	grade 8	230lb/ft