



Steering, Brake & Suspension Specialists

#6370RWBK-P12 - Installation Instructions

for 1963-87 Chevrolet C10 Truck Rear Axle Big Brake Kit

Parts:

1 ea	Left Rotor	2 ea	Thick Caliper Shim
1 ea	Right Rotor	4 ea	Thin Caliper Shim
1 ea	Left Caliper Bracket	4 ea	10mm Crush Washer
1 ea	Right Caliper Bracket	4 ea	M12x1.75x30mm Gr8.8 Bolt
1 ea	Left Caliper Assembly	4 ea	1/2 Flat Washer
1 ea	Right Caliper Assembly	4 ea	1/2 Lock Washer
1 ea	12 Bolt Gasket	8 ea	3/8-16x 1 1/2 Gr8 Bolt
2 ea	Brake Hose Tab	8 ea	3/8-16 Gr8 Nut
2 ea	Brake Tab Clamp	8 ea	3/8 Lock Washer
2 ea	Brake Hose	16 ea	3/8 Flat Washer
2 ea	Brake Hose Clip		Wheel Stud
2 ea	10mm Banjo Bolt		

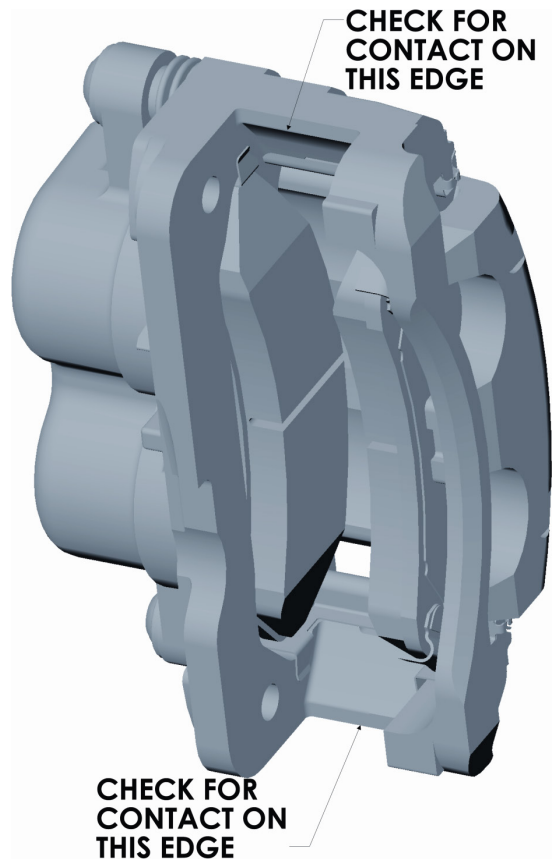
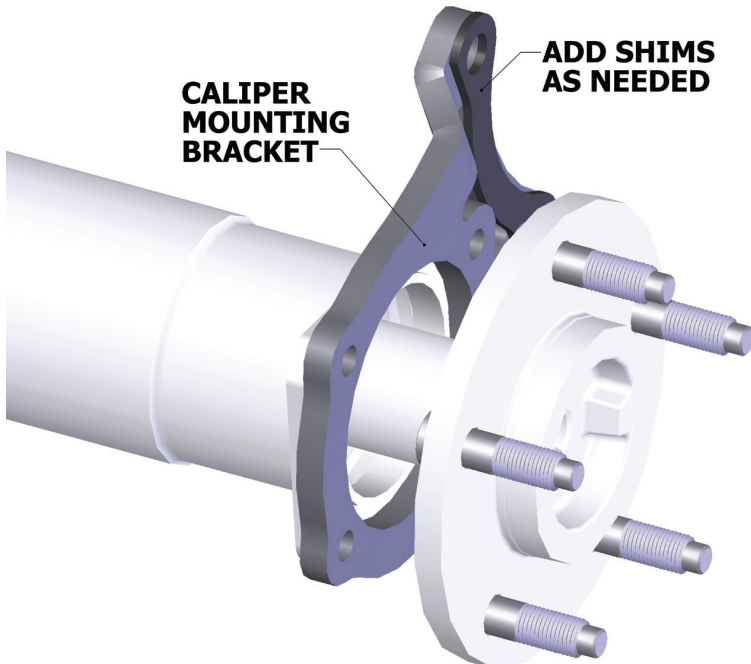
5. Install the caliper brackets on the axle housing.
6. Install the axles in the axle housing. Install the C-clips onto the axles.
7. Install the rotors onto the axle flanges.
8. Install the caliper assemblies onto the caliper brackets. The bleed screws will be toward the top of the calipers. In order to maximize the friction contact between the pads and the rotor, the caliper has a tight tolerance to the rotor. Due to variations in the caliper castings, you may need to remove a small amount of metal from the edges of the caliper. This can be done with a flat hand file.

Notes:

This kit is designed to work with 15" or larger wheels.

Instructions:

1. Disconnect the rear brake hoses from the hard lines on the axle. (New brake hoses are included with the disk brake kit.)
2. Remove the differential gear cover, the C-clips from the axles, and then the axles.
3. Remove the brakes drums and backing plates.
4. Check to see if the new wheel studs are longer than the wheel studs in the axle. If the new studs are longer install them into the axle.



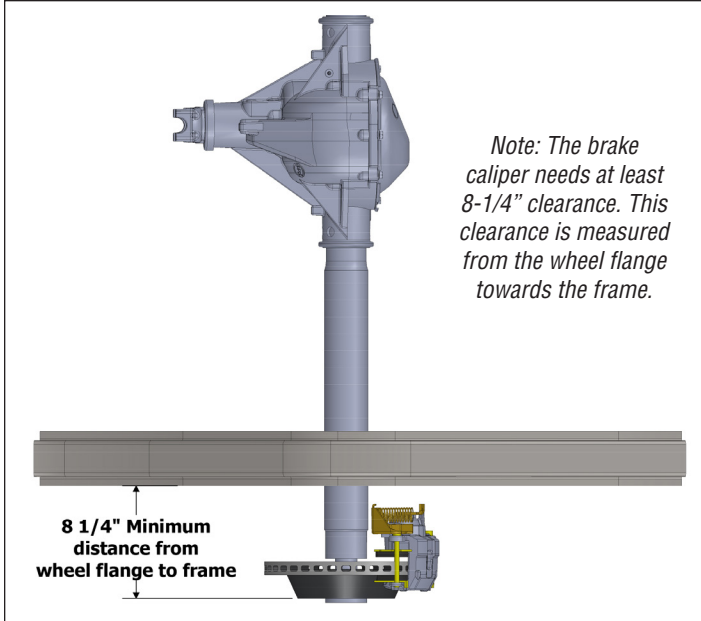
Classic Performance Products, Inc. 714.522.2000 | fax 714.522.2500
 378 E. Orangethorpe Ave. | Placentia, CA 92870 | www.classicperform.com

#6370RWBK-P12 - Installation Instructions

(Continued)

9. Check that the axles can turn freely.
10. Install the differential gear cover using one of the new gaskets.
11. Install the new parking brake cables. (Cars that already had disc brakes may not need to replace their parking brake cables.)
12. Loosely install the new hoses onto the calipers. Do not tighten the bolts against the crush washers at this time.
13. Install the brake hose tabs and clips onto the new brake hoses. Connect the brake hoses to the hard lines. The hard line may need to be repositioned. Secure the brake hose tabs to the axle with the tab clamp.
14. Tighten both ends of the brake hoses.
15. Check the function of the parking brake. The parking brake is self adjusting and may need to be applied several times before it works. The parking brake adjustment will affect how well the brake performs
16. Bleed the brakes.
17. Recheck that all the nuts and bolts are tight.

PLEASE NOTE: The installer needs to make sure that nothing can make contact with a brake hose, caliper, or other brake component at any point through the entire range of steering and suspension movement. The installer also needs make sure none of the steering or braking components can become bound or jammed at any time through the range of suspension or steering movement.



GENERAL TORQUE SPECIFICATIONS:

1/4"	grade 5	10lb/ft	1/4"	grade 8	14lb/ft
5/16"	grade 5	19lb/ft	5/16"	grade 8	29lb/ft
3/8"	grade 5	33lb/ft	3/8"	grade 8	47lb/ft
7/16"	grade 5	54lb/ft	7/16"	grade 8	78lb/ft
1/2"	grade 5	78lb/ft	1/2"	grade 8	119lb/ft
9/16"	grade 5	114lb/ft	9/16"	grade 8	169lb/ft
5/8"	grade 5	154lb/ft	5/8"	grade 8	230lb/ft

NOTE: With 18" and larger wheels we recommend 1/2" wheel studs. The larger the wheel diameter, the greater the force is on the wheel studs. Please inquire about replacement wheel stud kits available from CPP.

© Classic Performance Products, Inc. 2015
All rights reserved. This document may not be reproduced without prior written permission of CPP.