



Steering, Brake & Suspension Specialists

# #4754BB - Power Brake Booster Installation Instructions for 1947-54 Chevy Trucks

## Parts List:

- |                             |                            |
|-----------------------------|----------------------------|
| 1) Power Brake Booster      | 1) Strut Rod Stabilizer    |
| 1) Master Cylinder          | 1) Pedal Push Rod Assembly |
| 1) Booster Mounting Bracket | 1) Hardware Kit            |

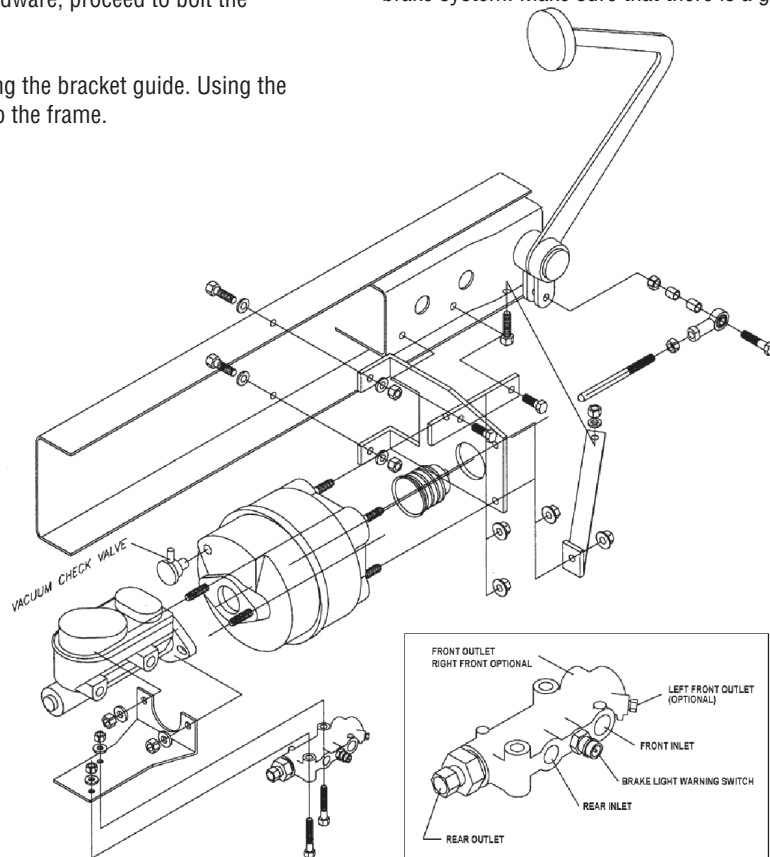
## Notes:

Make sure this kit fits your application before painting or plating. Beware that chroming or painting the booster can cause it to malfunction if not performed properly. Parts that have been painted, plated or modified may not be returned.

## Instructions:

1. Remove the stock master cylinder from its mounting bracket. Clean the mounting bracket and 16" of frame to the rear of the mounting bracket.
2. Line up the booster bracket mounting holes with the holes on the frame bracket. Using the supplied hardware, proceed to bolt the bracket to the frame.
3. Drill two holes through the frame using the bracket guide. Using the hardware provided, bolt the bracket to the frame.

4. Bolt the booster back onto the bracket.
5. Attach the pedal push rod to the brake pedal with the hardware provided in the kit. The pedal height can be adjusted with the heim joint. Once all adjustments are made be sure to tighten the jam nut.
6. Use the supplied hardware to attach the pedal push rod to the brake pedal. The supplied aluminum spacer will be used in place of the factory clutch pedal if it is no longer there.
7. Bolt the strut rod bracket to the inside lower booster stud and to the frame. A 3/8" hole will need to be drilled into the frame to mount the bracket. This bracket **MUST** be bolted to the frame for the added strength.
8. With the bracket and booster installed, proceed to bench bleed the master cylinder before installing it.
9. Route 3/8" vacuum line from the booster to the manifold vacuum. Make sure that all brake lines are hooked up and proceed to bleed the brake system. Make sure that there is a good firm pedal and enjoy.



For technical help call Classic Performance Products Monday thru Friday 8:30am to 5:00pm at (714) 522-2000.

**Classic Performance Products, Inc.** 714.522.2000 | fax 714.522.2500

175 E. Freedom Avenue | Anaheim, CA 92801 | www.classicperform.com