

*Steering, Brake & Suspension Specialists*

# #1012RWBK-P12 - Brake Installation Instructions

## 1964-74 A, F, and X Body B.O.P. Rear Axle Big Brake Kit

### Parts List:

1 ea.	Left Rotor	2 ea.	Thick Caliper Shim
1 ea.	Right Rotor	4 ea.	Thin Caliper Shim
1 ea.	Left Caliper Bracket	4 ea.	10mm Crush Washer
1 ea.	Right Caliper Bracket	2 ea.	Parking Cable Extension
1 ea.	Left Caliper Assy	4 ea.	M12x1.75x30mm Gr8.8 Bolt
1 ea.	Right Caliper Assy	4 ea.	1/2 Flat Washer
2 ea.	Spacer Bushing	4 ea.	1/2 Lock Washer
4 ea.	Bearing Spacer	8 ea.	3/8-16x 1-1/2 Gr8 Bolt
2 ea.	Brake Hose Tab	8 ea.	3/8-16 Gr8 Nut
2 ea.	Brake Tab Clamp	8 ea.	3/8 Lock Washer
2 ea.	Brake Hose	16 ea.	3/8 Flat Washer
2 ea.	Brake Hose Clip	10 ea.	Wheel Stud
2 ea.	10mm Banjo Bolt		

### Replacement Parts:

1988-1992 Lincoln Continental Calipers  
 1988-1992 Lincoln Continental Brake Pads  
 CPP 31817 Left Rotor  
 CPP 31817 Right Rotor

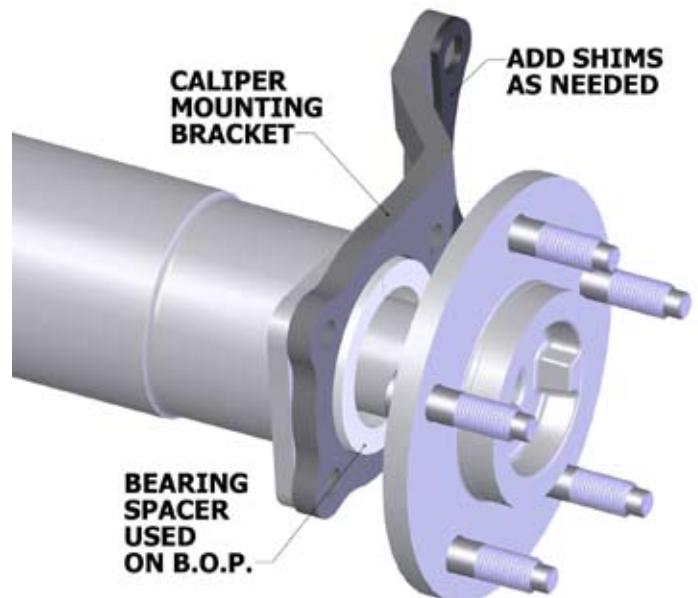
### Notes:

This kit is designed to work with 17" or larger wheels.  
 1968-69 Camaro and Firebird use two right side calipers and brackets.

### Instructions:

1. Disconnect the rear brake hoses from the hard lines on the axle. (New brake hoses are included with the disk brake kit.)
2. Remove the differential gear cover. Remove the C-clips from the axles. Remove the axles.
3. Remove the brakes drums and backing plates.
4. Check to see if the new wheel studs are longer than the wheel studs in the axle. If the new studs are longer, install them into the axle.
5. Install the caliper brackets on the axle housing.

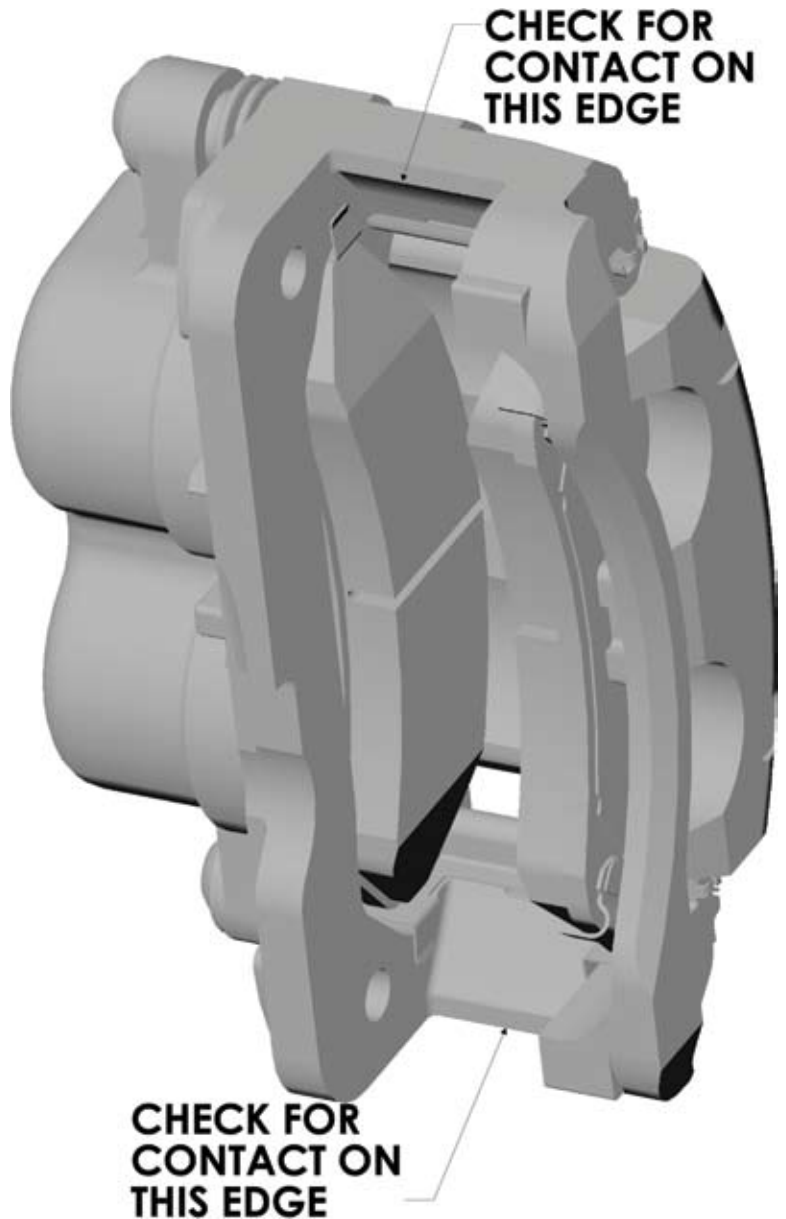
6. Install the spacer bushings on the axle housing.
7. Install the bearing spacers over the axle.
8. Using the new 3/8-16 1-1/2 bolts, tighten the bearing retainer on the axle housing.
9. Install the rotors onto the axle flanges.



10. Install the caliper assemblies onto the caliper brackets. The bleed screws will be toward the top of the calipers.
11. Check that the axles can turn freely. Add shims as needed. In order to maximize the friction contact between the pads and the rotor, the caliper has a tight tolerance to the rotor. Due to variations in the caliper castings, you may need to remove a small amount of metal from the edges of the caliper. This can be done with a flat hand file.

## #1012RWBK-P12 - Brake Installation Instructions (Continued)

12. Install the new parking brake cables. (Cars that already had disc brakes may not need to replace their parking brake cables.)
13. Loosely install the new hoses onto the calipers. Do not tighten the bolts against the crush washers at this time.
14. Install the brake hose tabs and clips onto the new brake hoses. Connect the brake hoses to the hard lines. The hard line may need to be repositioned. Secure the brake hose tabs to the axle with the tab clamp.
15. Tighten both ends of the brake hoses.
16. Check the function of the parking brake. The parking brake is self adjusting and may need to be applied several times before it works. The parking brake adjustment will affect how well the brake performs.
17. Bleed the brakes.
18. Recheck that all the nuts and bolts are tight.



*For technical help call Classic Performance Products Monday thru Friday 8:30am to 5:00pm at (714) 522-2000.*

**Classic Performance Products, Inc.** 714.522.2000 | fax 714.522.2500  
175 E. Freedom Avenue | Anaheim, CA 92801 | [www.classicperform.com](http://www.classicperform.com)